



Third Annual

Family Field Day at Lowber

Visit the Lowber Abandoned Mine Drainage Treatment Project

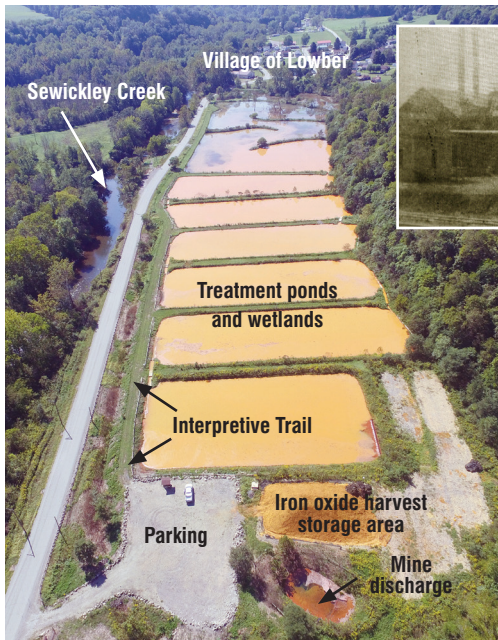
September 18, 2019 10:00 a.m. to 2:00 p.m.

Registration 9:00 a.m. Welcome 9:30 a.m.

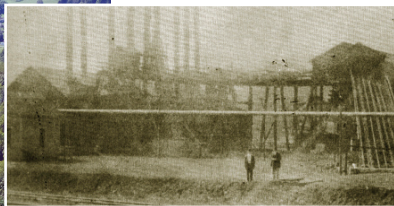
The Sewickley Creek Watershed Association (SCWA) cordially invites you to the third annual environment education field day for families at the Lowber Abandoned Mine Drainage (AMD) project in Lowber, PA.

This is an opportunity to learn about mine drainage and

restoration, developing partnerships to restore and protect our environment including demonstrations by professors and college students. Environmental and nature stations include history of the site, demonstrations of water testing, plant sampling methods, microbiology, kayak and water safety.



A drone photo of the Lowber Project shows the system and how close it is to Sewickley Creek



A mechanized deep coal mine operated here from 1902 to 1938.



Abandoned mine drainage flows through the treatment ponds.



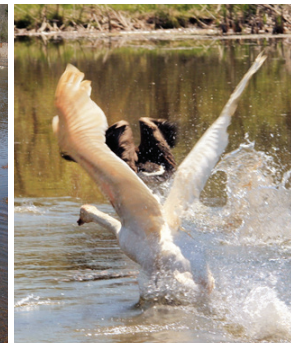
Iron oxide settles in the ponds and is harvested and sold for commercial use.



Treated clean water exits the final wetland filtering pond and enters Sewickley Creek.



The Lowber Project also provides wildlife habitat. This snapping turtle and a pair of swans make their homes at the wetland.



Family Field Day is FREE and for everyone!

SCWA partners participating in this event include:

- California University of PA
- Cub Scout Pack 258
- Hedin Environmental/Iron Oxide Recovery
- Menasha Packaging Corporation
- Creation Trails Wetlands
- Lowber Volunteer Fire Dept.
- PA Department of Conservation and Natural Resources (DCNR)
- Mike Mance Cokeoven Historian and Lou Corsi Railroad Historian
- Shane Dushack AdventureTRAC
- University of Pittsburgh at Greensburg
- Westmoreland Conservation District
- Western PA Conservancy
- and more

A perfect summer activity for kids of all ages and parents too!

Free lunch, snack and water available.
This is an outdoor location. Please dress accordingly.
No sandals or flip flops.

Please RSVP by September 15 if possible.
(If you are unsure of your schedule, or forget to RSVP, it is o.k. to just show up.)

To RSVP and for more information contact Tom Keller 724-610-0829 or scwa@sewickleycreek.com

website: www.sewickleycreek.com

Directions on back

Rain date September 20

Third Annual



Family Field Day at Lowber

Visit the Lowber Abandoned Mine Drainage Treatment Project

September 18, 2019 9:00 a.m. to 2:00 p.m.

DIRECTIONS

Lowber Abandoned Mine Drainage Treatment Project address:
511 Lowber Road, Irwin, PA 15642

GPS: 40° 15' 01.93" North; 79° 45' 50.16" West.

Located on the Herminie-Lowber Road approximately ½ mile from Lowber.

Take Route 136 west from Greensburg. You will pass Hempfield HS, Toll 66, the Borough of Arona, and cross over the PA Turnpike.

Once you come to the village of Darragh, 136 goes Left, but you go straight ahead on the Evanstown Road towards Herminie.

Follow the main street of Herminie straight thru to a T at its end. Turn left on this road (Herminie-West Newton Road may be its name) and go to the STOP.

With a Dairy Queen on the right and a gas station on the left, you will turn right past the DQ onto the Lowber Road.

Pass the Yough High School and follow Lowber Road about 2.5 miles to the site.

OR

Take Route 31 west to West Newton. Come down the long hill into town.

Just before the Yough River bridge, turn R onto Water Street. Follow Water Street to the Giant Eagle; turn Left and cross the RR tracks. Follow this road (Sutersville Road) along the Yough River for about a mile and a half.

Cross over Sewickley Creek and take an immediate R across the RR tracks and onto the Lowber Road. Pass the Lowber VFD on the right.

The main road makes a R, L, R, L thru the town of Lowber; once you are out of the houses you will see the Lowber site on the left hand side.